

System Center Management Pack for DataCore™ SANsymphony™-V Storage Hypervisor

Monitor your SANsymphony-V virtualized storage environment from your Microsoft® System Center Operations Manager console

Features

- Graphical views of physical and virtualized storage resources (Figure 1)
 - » DataCore storage virtualization servers
 - » Physical storage pools
 - » Storage consumers (hosts)
 - » Virtual disks
- Chart of I/O performance (Figure 2)
- Log of error and warning messages
- Alert / notification for abnormal conditions
 - » Critical, Warning, Informational
- Troubleshooting tips
- Historical reports exportable to Excel, Word and PDF
- Single pane of glass display
- Familiar, easy to use interface

Plugs into Microsoft System Center Operations Manager 2007 and 2010

Description

The SANsymphony-V Management Pack for Microsoft System Center Operations Manager provides constant visibility to the health, performance and availability of the storage resources virtualized by the SANsymphony-V storage hypervisor. It monitors both on-premises and cloud-based, off-premises components that make up your DataCore configuration, including redundant high-availability elements and those in remote disaster recovery sites. The information appears on a single pane of glass display alongside other facets of your datacenter to simplify end-to-end service management of your diverse storage environment.

IT organizations dependent on heterogeneous disk farms can monitor assorted storage equipment from the central System Center Operations Manager console without being overwhelmed by the many different device characteristics. The unified view covers assets ranging from internal server hard disk drives (HDDs), solid state disks (SSDs) and external direct-attached storage (DAS) to enterprise-class SAN arrays, irrespective of the age, model or brand. All of the popular storage manufacturers are supported, including Dell, Dot Hill, EMC, Fujitsu, Fusion-io, HDS, HP, IBM, LSI, NetApp, Nexsan, Oracle, Promise, Seagate, Texas Memory Systems, Violin Memory, XIO and others.

Benefits

- Centrally monitor heterogeneous disk farms from the System Center Operations Manager console
- Simplify end-to-end service management of diverse storage equipment
- Quickly determine the health of the system and its key components
- Immediately detect any abnormal conditions
- Isolate trouble spots
- Identify source of problem and potential solutions
- Visualize performance trends
- Track capacity consumption
- Trigger conditional actions in response to events



Collection, Charting, Reporting

The Management Pack collects and synthesizes the information from the virtualized SANsymphony-V environment using DataCore's comprehensive library of PowerShell Cmdlets. Any events of importance are bubbled up to the top level, classified according to severity (Critical, Warning, Informational). The notifications are accompanied by troubleshooting tips to help you isolate the source of the problem and provide guidance for resolving them.

Configuration diagrams explode the hierarchy of relationships between storage consumers (hosts) and their disks (Figure 1). Detail views itemize the properties of virtual disks, physical disk pools and the corresponding disk drives. Among the details, you'll find disk capacity, port information and the DataCore servers responsible for those components. The built-in search function and extensive context sensitive links speed up navigation through larger, more complex topologies.

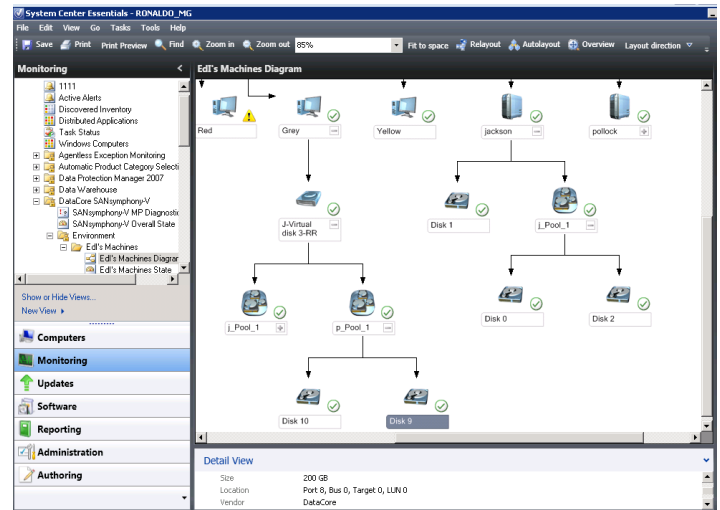


Figure 1. Exploded Diagram of Relationship between Hosts and their Storage Resources

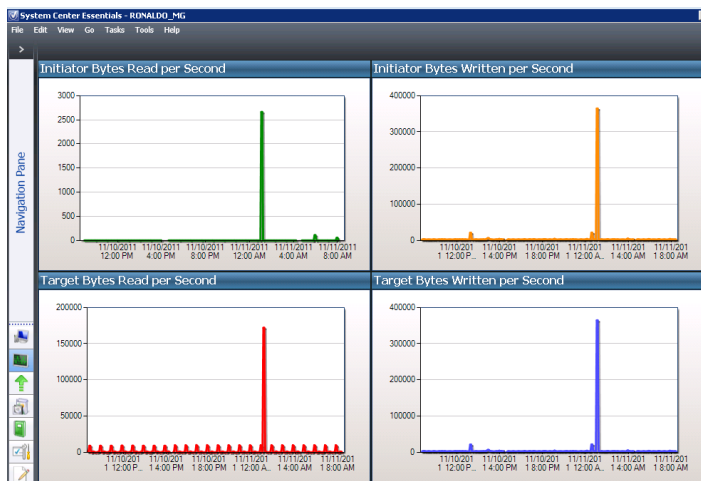


Figure 2. Historical Performance Charts Reveal Peak Loads

Reports itemize state changes that have transpired over a period of time. They help you to correlate those transitions with other notable differences in system behavior. You can trace configuration changes as well, such as the appearance of new components or moments of downtime. The reports may be exported to Excel, Word and PDF documents for further analysis and dissemination.

You can also track key I/O performance metrics over time to understand the relative magnitude and timing of peak loads compared to the steady state characteristics of average workloads (Figure 2). The analysis can be combined with available disk space charting to help you get a better handle on long range capacity planning.

Taken together, these features equip you with the necessary insight to manage your SANsymphony-V environment as an integral member of your overall IT infrastructure from a common System Center console.

For additional information,
please visit: www.datacore.com
or e-mail: info@datacore.com